

A photograph of a three-story red brick terraced house with a grey tiled roof. A red line outlines the roof area. The house has white-framed windows and doors. A small garden area with a patio and outdoor furniture is visible in front. The sky is blue with some clouds.

# Mowsley Court

HUSBANDS BOSWORTH, LUTTERWORTH

JAMES  
SELICKS

[jamesellicks.com](http://jamesellicks.com)

A photograph of a three-story red brick terraced house with a grey tiled roof. A red line outlines the roof area. The house has white-framed windows and doors. A small garden area with a patio and outdoor furniture is visible in front. The sky is blue with white clouds.

# Mowsley Court

HUSBANDS BOSWORTH, LUTTERWORTH

JAMES  
SELICKS

[jamesellicks.com](http://jamesellicks.com)

JAMES  
SELICKS



This two-bedroom mews townhouse in the popular Mowsley Court community, close to the heart of this sought after south Leicestershire village, is ideal for both first-time buyers and downsizers alike. A perfect lock up and leave bolthole in the heart of the countryside, with good commuter links, by both road and rail.

Two double bedrooms • Highly sought after village location • Communal gardens • Open plan living/dining room • Kitchen • Shower room • Allocated off-road parking • Ideal lock up and leave/bolthole • Suitable for first-time buyers and downsizers •

#### Accommodation

You gain a sense of the space that this home has to offer as soon as you step in through the front door into the open plan sitting/dining room. Natural light fills the room through two windows, both of which feature plantation-style shutters. The kitchen is tucked away to the corner on the left as you come in through the front door. Here you will find an extensive range of fitted wall and base units offering plenty of storage with work surfaces above. There is space for a fridge freezer and oven, plumbing and space for a washing machine.

Upstairs the landing area offers space for a desk/home office area. There is a built-in cupboard over the stairs that offers good storage. There are two double bedrooms, the largest of which features fitted louvre-style door cupboards, with lighting. The shower room features a contemporary white suite comprising walk-in shower cubicle, WC and wash hand basin, as well as a fitted airing cupboard.

#### Outside

To the front of this home is a communal block paved patio and seating terrace with a blocked paved path leading to the canopied door that is flanked by communal lawns and bedding borders. The allocated parking space for this property is situated through a passage and underneath the arches on the exterior of the Mowsley Court complex, accessible from the junction of Honeypot Lane and Broad Lane.

#### Location

Husbands Bosworth is a thriving, attractive village with many interesting period properties, offering a general store, medical centre, primary school, post office, parish Church and public house. The area is popular with buyers wanting convenient access to Market Harborough, Leicester and Lutterworth, and provides excellent communications via rail from Market Harborough and Rugby and Junction 20 of the M1 at Lutterworth. Leicester City Centre is some 12 miles distant offering a wider range of amenities normally associated with a large City Centre. Both Market Harborough and Leicester offer mainline rail connections to London St Pancras in approximately an hour.

**Tenure:** Leasehold with a share of the Freehold

**Freeholders:** Mowsley Court Management Company Limited \*buyer will own a share of the management company

**Lease Length:** 999 years from 1<sup>st</sup> January 2001

**Service charge:** £80.00 per calendar month (as of 6<sup>th</sup> August 2025) to include building insurance.

**Service charge reviewed:** Annually

**Listed Status:** Not Listed

**Conservation Area:** Husbands Bosworth

**Local Authority:** Harborough District Council **Tax Band:** C

**Services:** The property is offered to the market with all mains services and electric storage heating

**Broadband delivered to the property:** FTTC

**Non-standard construction:** Believed to be of standard construction

**Wayleaves, Rights of Way & Covenants:** Yes

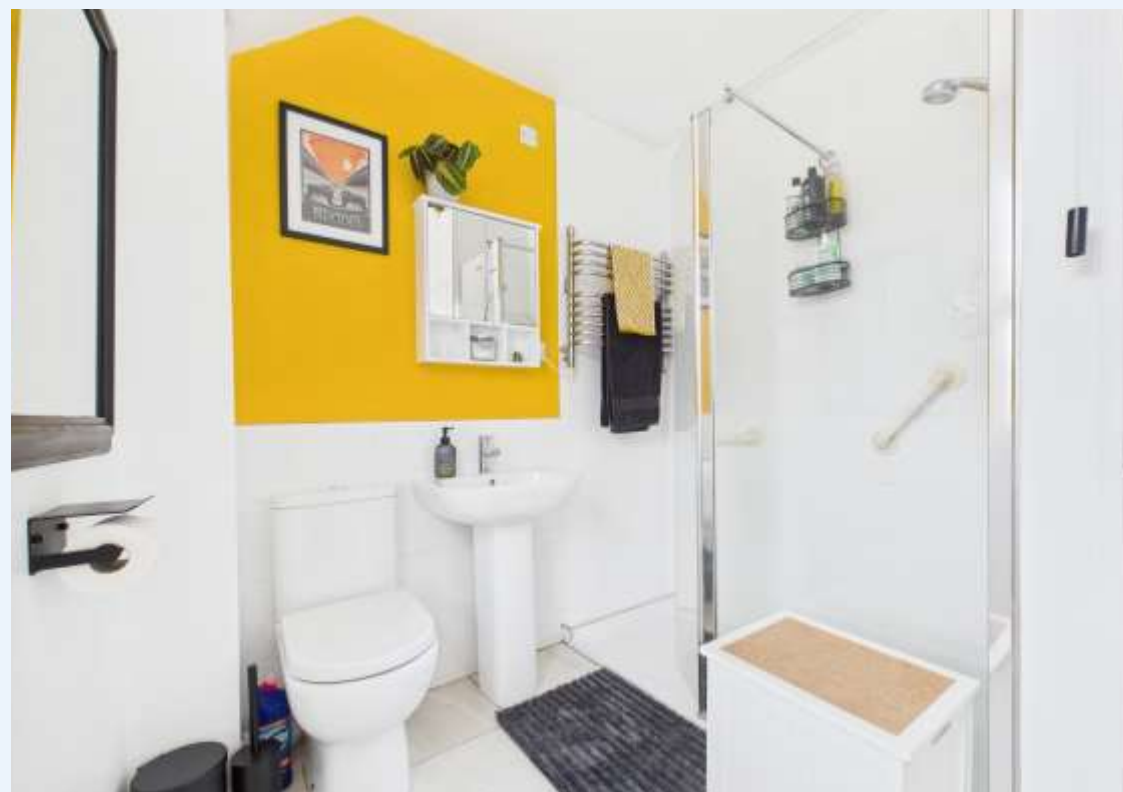
**Flooding issues in the last 5 years:** None

**Accessibility:** Two storey dwelling. No accessibility modifications/aids to the property

**Planning issues:** None which our clients are aware of

**Satnav Information:** The property's postcode is, LE17 6LR and Flat 3, Mowsley Court.







Market Harborough Office  
13 Church Street  
Market Harborough  
LE16 7AA  
01858 410008  
mh@jamesselicks.com

Leicester Office  
01162 854 554

Oakham Office  
01572 724437

[jamesselicks.com](http://jamesselicks.com)



Important Notice  
James Sellicks for themselves and for the Vendors whose agent they are, give notice that:

1) The particulars are intended to give a fair and substantially correct overall description for the guidance of intending purchasers and do not constitute part of, an offer or contract. Prospective purchaser(s) and lessees ought to seek their own professional advice.

2) All descriptions, dimensions, areas, reference to condition and if necessary permissions for use and occupation and their details are given in good faith and believed to be correct. Any intending purchaser(s) should not rely on them as statements or representations of fact but must satisfy themselves by inspection or otherwise as to the correctness of each of them.

3) No person in the employment of James Sellicks has any authority to make or give any representation or warrant, whether in relation to this property or these particulars, nor to enter into any contract relating to the property on behalf of the Vendors.

4) No responsibility can be accepted for any expenses incurred by any intending purchaser(s) in inspecting properties that have been sold, let or withdrawn.

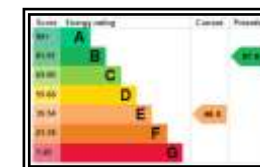
#### Measures and Other Information

All measurements are approximate. Whilst we endeavour to make our sales particulars accurate and reliable, if there is any point which is of particular importance to you, please contact this office and we will be pleased to check the information for you, particularly if contemplating travelling some distance to view the property.



Approximate total area<sup>(1)</sup>  
71.9 m<sup>2</sup>  
775 ft<sup>2</sup>

Reduced headroom  
1.5 m<sup>2</sup>  
16 ft<sup>2</sup>



(1) Excluding balconies and terraces

Reduced headroom  
Below 1.5 m/5 ft

Calculations reference the BCS IPMS 3K standard. Measurements are approximate and not to scale. This floor plan is intended for illustration only.

ORAFES360

